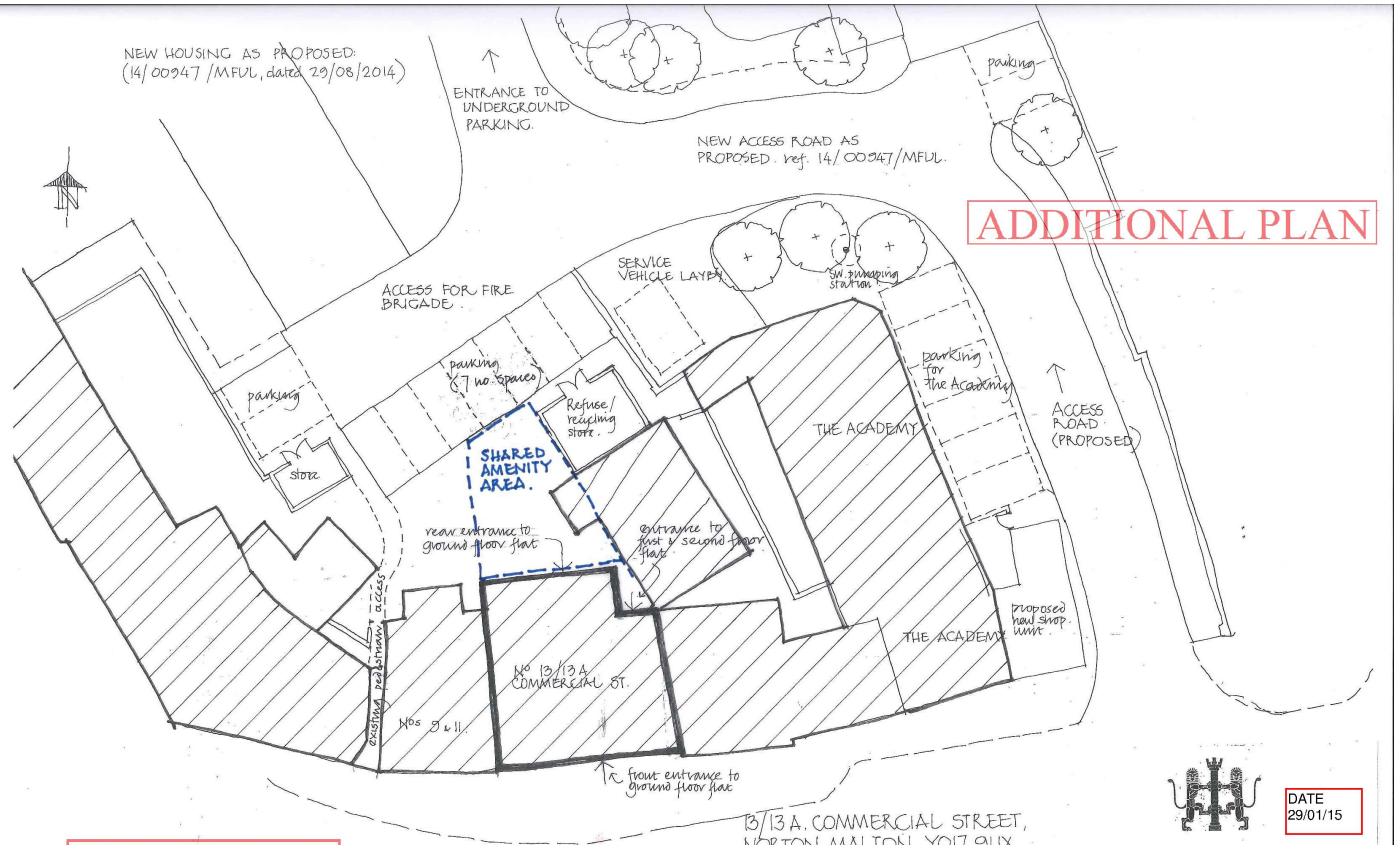


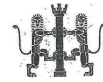
ADDITIONAL PLAN



THIS COPY HAS BEEN MADE BY OR WITH THE AUTHORITY OF RYEDALE DISTRICT COUNCIL PURSUANT TO SECTION 47 OF THE COPYRIGHT DESIGNS AND PATENTS ACT 1988, UNLESS THAT ACT PROVIDES A RELEVANT EXCEPTION TO COPYRIGHT. THE COPY MUST NOT BE COPIED WITHOUT THE PRIOR PERMISSION OF THE COPYRIGHT OWNER.



13/13 A. COMMERCIAL STREET,
NORTON, MALTON. YO17 9HX.
**PROPOSED CHANGE OF USE OF
GROUND FLOOR OFFICE TO SINGLE
RESIDENTIAL FLAT UNIT.**
Drg ref: 4312 - AR20 - 03 - A3



DATE
29/01/15

STONE & ASSOCIATES LTD
The Studio, 7b Saville Street,
Malton, YO17 7LL
01653 696100